



Pro-Line Poxy and Stainless Steel

Product Use: Pro-Line Poxy™ is a 100% solids blend of epoxies and special colored silica fillers and offers high performance, color uniformity, durability, and stain resistance with extraordinary ease of use.

Setting Mortar: Spread mortar with flat side of trowel to key into substrate; then, apply additional mortar to a depth sufficient to be notched with a suitable trowel that will leave only enough mortar to give 100% contact with back of tile and a subsequent mortar bed of 1/16" to 1/4".

Grout: Apply with hard rubber float held at a 45° angle to surface using diagonal strokes to fill joints completely. Remove excess grout with rubber float held at 90° angle to surface. Clean initial residue with ample amounts of clean water and sponge using as little pressure as possible and changing the water often. Use circular motion to clean surface. After initial cleaning with sponge remove any additional residue with a slightly damp towel or cloth by dragging over surface towards you. Let dry, check for any remaining residue and repeat if necessary.

Curing: Minimum cure for grout is obtained in approximately 24 hours depending on ambient temperatures. As a setting material, normal grouting can be done after a minimum of 24 hours. When used to install tile in an area that will be continually wet, it is recommended the installation be allowed to cure a minimum of 7 days and be thoroughly dry prior to water exposure.

Glass Tile: Not all glass tiles can be used for exterior, wet areas, or be submerged in water. Check with glass tile manufacturer for recommended areas of use.

Stainless Steel Substrate: Steel must be rigid, meet the maximum allowable standard for deflection of L/360 for tile or L/480 for natural stone, and be free of rust, dirt, paint, manufacturing oils, or other surface contamination. Scarify surface and wash with a strong detergent, then rinse thoroughly. Follow the stainless steel manufacturer's instructions to confirm waterproof integrity and to "stretch" the steel elements before installation.

Bonded Materials Company products are designed for the sole purpose of adhesion, not for protection of steel elements and cannot be held responsible for corrosion, rust or contamination of steel elements or construction



This information is given as generalized reference; see specific product instructions or product sheets for detailed information.
If an installation and materials should be change outside the detailed instructions, please contact our technical support dept. for assistance.

4330 N. 43rd Ave. Suite B-4 Phoenix, Az.85031 Ph. 623-873-0001 Toll Free 877-726-6333 www.bondedmaterials.com





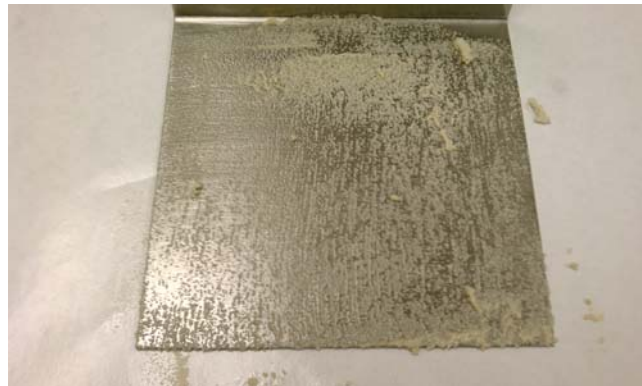
Installation of Glass Tile on stainless steel mockup:

This application should not be construed as a general endorsement with respect to the application of glass tile over stainless steel since job site conditions, grade, finish of the stainless steel and the type of glass tile available vary considerably.

Grind surface and washed clean



Apply skim coat with flat trowel onto surface.



Apply mortar combed in one direction





Apply tile and press in with grout float or other flat object to ensure 100% coverage to surface and back of tile leaving minimum of 1/8" thickness continuous setting bed between tile and substrate.



Allow mortar to cure 24-48 hrs.
Mix and apply PL Poxy grout per instructions contained within data sheet.



Using epoxy to set ceramic tile or stone on a stainless steel surface is no small task. It does take time and patience. Dividing the area into smaller sections would be the preferred method. When done properly it will make a strong, durable, and aesthetically pleasing finish.

Note: There are alternative methods to set tile over stainless steel. When doing exterior applications it is highly recommended that the work area and material at the jobsite be shaded from the direct sunlight. When applying tile on vertical surfaces depending on size and weight of tile sag/slippage may occur.